



## Borough of Telford and Wrekin

### Health & Wellbeing Board

Wednesday 21 May 2025

### Children and Young People's Strategy 2025-2028

---

<b>Cabinet Member:</b>	Cllr Shirley Reynolds - Cabinet Member for Children, Young People, Education, Employment & Skills, Cllr Kelly Middleton - Cabinet Member for Public Health & Healthier Communities
<b>Lead Director:</b>	Jo Britton – Executive Director Children Services & Public Health, Helen Onions - Director: Health & Wellbeing, Darren Knibbs - Director: Children's Safeguarding & Family Support, Simon Wellman – Director: Education & Skills
<b>Service Area:</b>	Children Services & Public Health
<b>Report Author:</b>	Helen Onions - Director: Health & Wellbeing
<b>Officer Contact Details:</b>	<b>Tel:</b> 01952 381366 <b>Email:</b> helen.onions@telford.gov.uk
<b>Wards Affected:</b>	All Wards
<b>Key Decision:</b>	Key Decision
<b>Forward Plan:</b>	14 October 2024
<b>Report considered by:</b>	SMT – 3 December 2024, 14 January 2025 Business Brief – 23 January 2025 Cabinet – 13 February 2025 Health & Wellbeing Board – 20 March 2025

---

#### 1.0 Recommendations for decision/noting:

It is recommended that the Health & Wellbeing Board:

- 1.1 Approve and support the commitments and proposals in the Telford & Wrekin Children & Young People's Strategy 2025-2028.

## **2.0 Purpose of Report**

- 2.1 This report summarises the proposals of the draft Telford & Wrekin Children & Young People's Plan for 2025 – 2028.

## **3.0 Background**

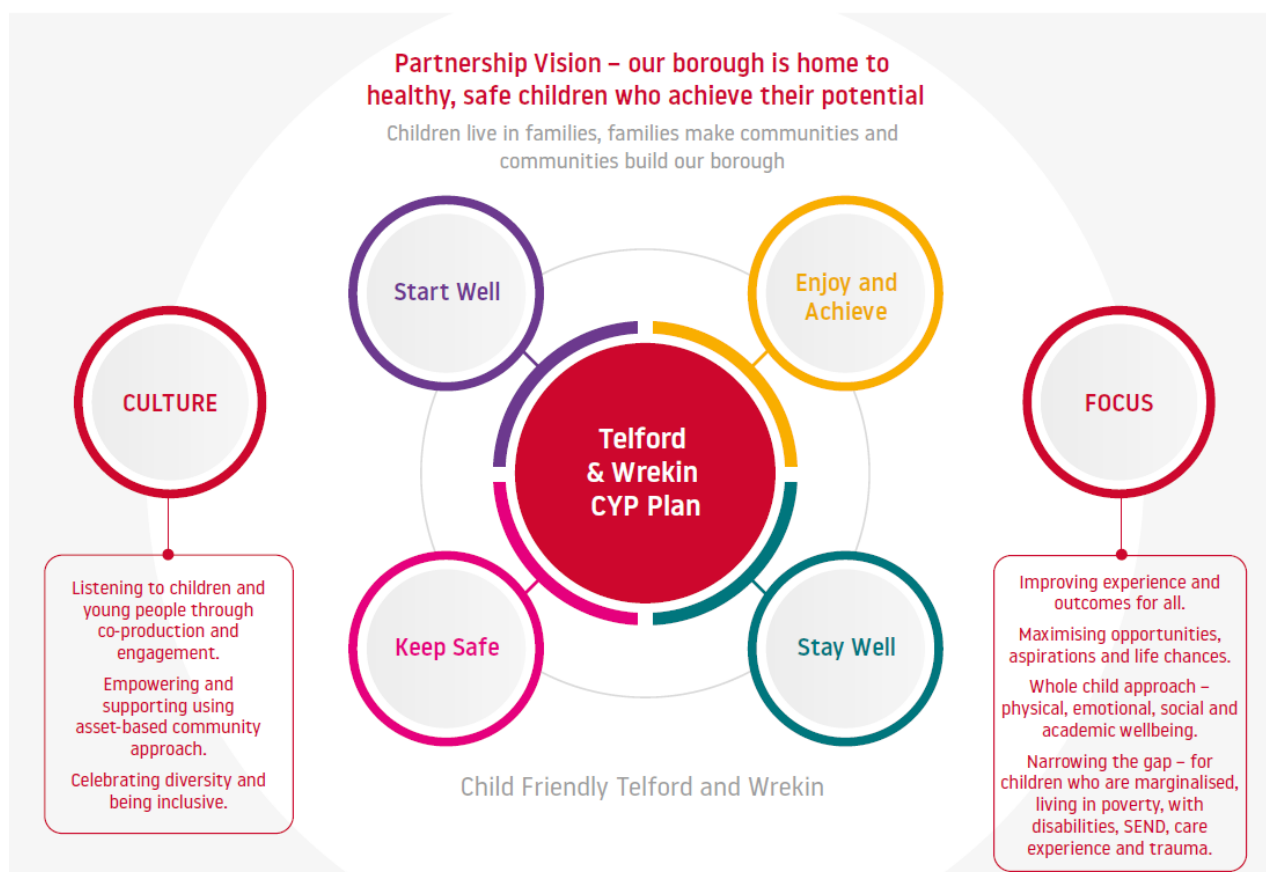
- 3.1 Strong local partnership working between; children, young people and their families, the Council, the Police, the NHS and community and voluntary organisations, is vital to improving the life chances and outcomes for all our children and young people.
- 3.2 In recent years, a variety of local strategies aimed at improving the lives of our children and young people have been in place across a range of partnerships, for example the Safeguarding Children's Partnership and the Health & Wellbeing Board.
- 3.3 The Government is currently in the process of developing and launching a new set of national policies and reforms, such as the Children's Social Care reforms, the Children's Wellbeing and Schools Bill and the NHS 10 year plan.
- 3.4 A new Children & Young People's Strategy for Telford & Wrekin is now being proposed to streamline and more effectively deliver our strategic commitments across the range of children and young people's agendas and partnerships, alongside the rapidly changing national policy landscape.

## **4.0 Summary of main proposals**

- 4.1 The Telford & Wrekin Children & Young People's Strategy 2025-2028 is an overarching plan which will act as an umbrella for a range of supporting partnership strategies and transformation programmes. The vision of the strategy is that our borough is home to *healthy, safe children who achieve their potential*, with the four aims that all our children and young people: *start well, stay well, keep safe and enjoy and achieve*.
- 4.2 The proposals draw on engagement, consultation and co-production work undertaken as part of the development of the supporting strategies, such as the insight gathered from children and families with special educational needs and disabilities, through the development of Family Hubs, the Young Person's Year of Wellbeing campaign and the healthy weight consultation.
- 4.3 The Strategy adopts a whole-child approach to maximise outcomes for all children and young people, with a focus on narrowing the gap for those who are marginalised or in need, for whatever reason. The national Child Poverty Strategy

expected in Spring 2025, will provide further context to improve outcomes for some of our most challenged local families.

- 4.4 The commitment to listen to, empower and support children, young people, parents and carers through community-centered approaches, is at the heart of the Strategy. Celebrating diversity and being inclusive will need to be a clear part of our partnership culture.
- 4.5 Child Friendly communities and cities aim to ensure all children have a meaningful say in, and truly benefit from, the local decisions, services and spaces that shape their lives. Adopting a child friendly Telford & Wrekin approach fits strongly with the commitments in this Strategy as it will mean - the voices, needs, priorities and rights of children become an integral part of our local policies, programmes and decision-making.



- 4.6 A series of objectives are proposed under the four strategy aims, and these map to existing supporting strategy commitments. A set of high level delivery programme priorities for 2025/26 have been proposed. The strategy performance framework includes outcomes indicators aligned to the aims, objectives and priorities.

- 4.7 The Strategy includes draft proposals for governance relevant at the time of writing. In the context of the Children's Social Care Reforms and other expected national policy changes, further discussions with key strategic partners are needed to firm up the most effective governance arrangements.

## **5.0 Alternative Options**

- 5.1 An overarching Children & Young People's Strategy is needed to join up various agendas which are currently fragmented across partnerships, to ensure that the Council with partners take a whole-child approach to maximising aspirations, life chances and outcomes.

## **6.0 Key Risks**

- 6.1 Without an overarching Children & Young People's Strategy and shared set of commitments across Council teams, the Police, the NHS and community and voluntary sector there may be silo working which makes it more challenging to effectively take a whole-child approach and improve outcomes for all children.

## **7.0 Council Priorities**

- 7.1 The Children & Young People's Strategy 2025-2028 will predominately to support delivery of the Council priority:

- Every child, young person and adult lives well in their community.

However, children and young people and their families build our communities and borough and therefore the Strategy will also contribute to, and will benefit from, work programmes aligning to the other Council priorities:

- Everyone feels the benefit from a thriving economy.
- All neighbourhoods are a great place to live.
- Our natural environment is protected.
- A community focused innovative council providing effective, efficient and quality services.

## **8.0 Financial Implications**

- 8.1 The net 2024/25 budget for Children & Young people (excluding DSG) in 2024/25 is over £62m, made up of £49.6m for Children's Safeguarding & Family Support and £12.8m for Education & Skills. These two directorates represent approximately 40% of the Council's net 2024/25 budget.
- 8.2 All actions within the strategy for forthcoming years are intended to be met from within existing or planned resources. However, should additional resources be required, this will be considered in accordance with the Council's Governance process.

## **9.0 Legal and HR Implications**

- 9.1 The Children and Young People Strategy has been prepared in line with the council priorities, the priorities of the Local Safeguarding Partnership and in accordance with Working Together 2023. As the report eludes to, there are proposals for a number of national reforms that will impact on the strategy throughout the timeframe of this strategy and therefore the strategy will need to continue to be reviewed in line with these reforms as they take effect.

## **10.0 Ward Implications**

- 10.1 This Strategy affects all Wards, however children and young people in certain Wards are more impacted by poverty or more marginalised for a variety of reasons.

## **11.0 Health, Social and Economic Implications**

- 11.1 The four aims of this Strategy encompass a wide range of health, social and economic implications. The start well and stay well aims include health commitments to ensure the best start in life, the reduction of health inequalities and healthy lifestyles. The keep safe aim covers range social care and child protection agendas. The enjoy and achieve aim covers education and skills, aspirations and life chances, which all impact on the future economic prosperity in the Borough.

## **12.0 Equality and Diversity Implications**

- 12.1 The Strategy commits to a partnership culture which is inclusive and celebrates diversity. There is a focus on narrowing the gap for those who are marginalised, for example children living in poverty, with disabilities, SEND, care experience and trauma.

## **13.0 Climate Change and Environmental Implications**

- 13.1 No specific implications.

## **14.0 Background Papers**

None

## **15.0 Appendices**

A Telford & Wrekin Children and Young People's Strategy 2025 - 2028

## **16.0 Report Sign Off**

<b>Signed off by</b>	<b>Date sent</b>	<b>Date signed off</b>	<b>Initials</b>
Director	03/01/2025	09/01/2025	HO
Legal	03/01/2025	20/01/2025	DTW
Finance	03/01/2025	09/01/2025	TD

